

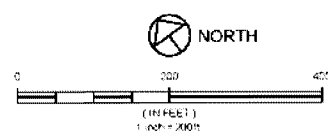
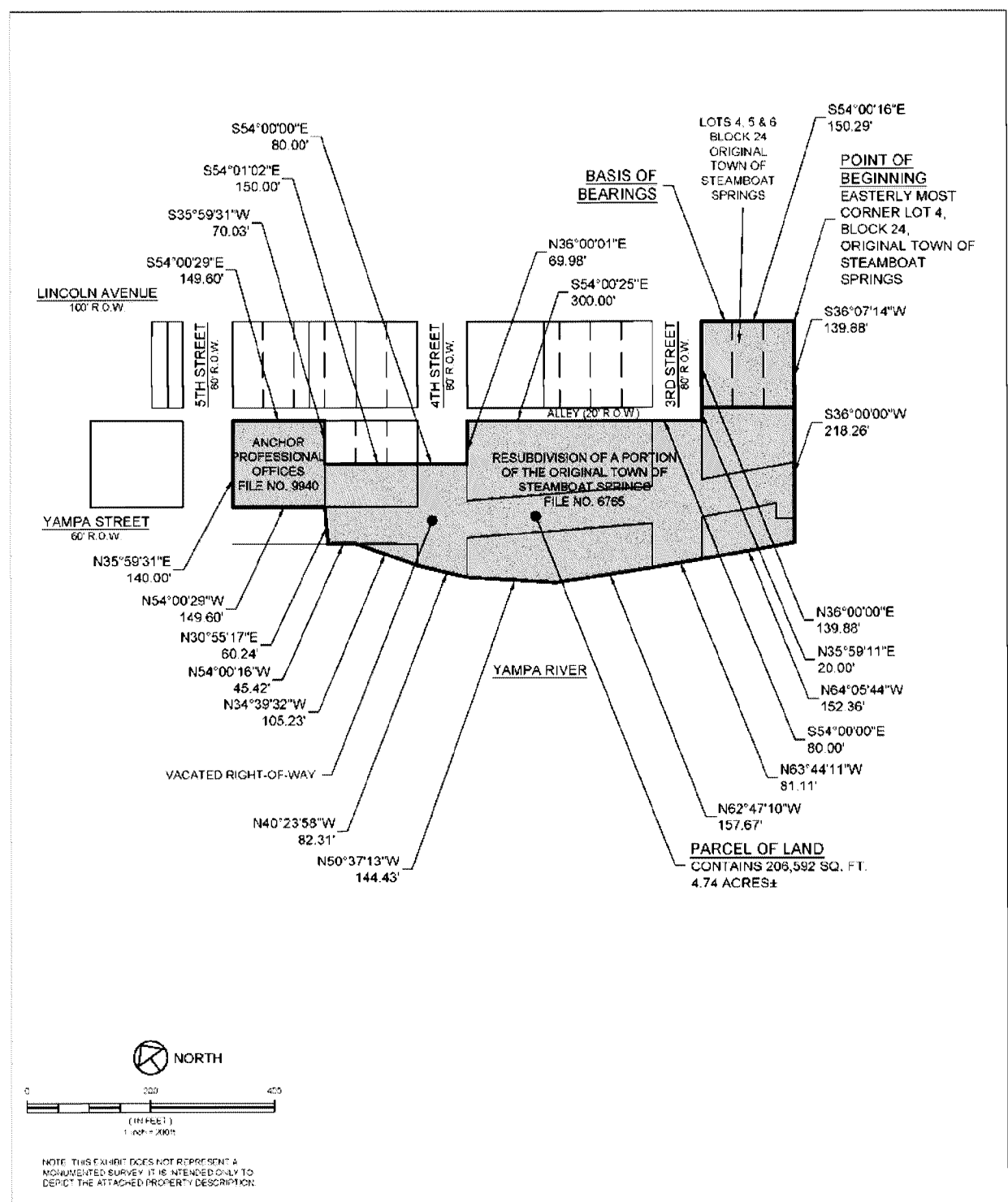
WHEN RECORDED RETURN TO:  
 WHITE BEAR ANKELE TANAKA & WALDRON  
 2154 East Commons Avenue, Suite 2000  
 Centennial, CO 80122

**RiverView Metropolitan District**  
 (In the City of Steamboat Springs, Routt County, Colorado)


**SPECIAL DISTRICT PUBLIC DISCLOSURE**  
 Pursuant to § 32-1-104.8 C.R.S.

Name of District:	RiverView Metropolitan District ("District")
Powers of the District:	All powers authorized in § 32-1-1004, C.R.S., including, but not limited to, fire protection, mosquito control, parks or recreational facilities or programs, traffic and safety controls, sanitation services, street improvements, television relay and translator facilities, transportation, water services, and solid waste disposal, subject to the limitations contained in the District's Service Plan.
Service Plan:	The District's Service Plan, which can be amended from time to time, includes a description of the District's powers and authority. A copy of the District's Service Plan is available from the Division of Local Government.
	RiverView Metropolitan District is authorized by Title 32 of the Colorado Revised Statutes to use a number of methods to raise revenues for capital needs and general operations costs. These methods, subject to the limitations imposed by section 20 of Article X of the Colorado Constitution, include issuing debt, levying taxes, and imposing fees and charges. Information concerning directors, management, meetings, elections and current taxes are provided annually in the Notice to Electors described § 32-1-809(1), C.R.S., which can be found at the District office, on the District's web site, on file at the Division of Local Government in the State Department of Local Affairs, or on file at the office of the clerk and recorder of each county in which the special district is located.
District Boundaries:	A map of the District's boundaries is attached hereto as Exhibit A. Please note that the District's boundaries may change from time to time. Please contact the District for the latest information.

## EXHIBIT A District Boundary Map



NOTE: THIS EXHIBIT DOES NOT REPRESENT A DOCUMENTED SURVEY. IT IS INTENDED ONLY TO DEPICT THE ATTACHED PROPERTY DESCRIPTION.

 www.landmark-co.com	PROJECT: 1522-007	<b>PROPERTY DESCRIPTION</b> RIVERVIEW PARCEL OF LAND NE1/4 SECTION 17, T6N, R84W, 6TH P.M. CITY OF STEAMBOAT SPRINGS, COUNTY OF ROUTH, STATE OF COLORADO	SHEET
	DATE: 05-09-17		2
	DRAWN BY: JAG		Of 2 Sheets
	CHECKED BY:		